

General & Safety Information

- Wear proper personal protective equipment (PPE).
- Operate all tools per manufacturer guidelines.
- Standard woodworking saws and blades can be used for cutting Fypon® polyurethane (PUR).
- Fypon PUR parts are NOT load bearing.
- For remodeling applications and alternative facades like stucco, vinyl, etc., please refer to Fypon General Remodeling and Alternate Facade Instructions, which can be found at [fypon.com/install](https://www.fypon.com/install).
- For best results, finish and allow to dry prior to installation. Refer to Fypon General Finishing Instructions, which can be found at [fypon.com/install](https://www.fypon.com/install).
- All Fypon products must be installed per the following instructions and finished within 90 days of installation to maintain warranty coverage.

Tools / Materials

- Pencil
- Tape Measure
- Level
- Square
- Hammer or pneumatic nailer
- Nail countersink
- Drill / driver (if using screws)
- Putty knife
- Sandpaper (220-grit recommended)
- Caulk Gun
- Exterior-grade Polyurethane-compatible sealant and / or filler
- Exterior-grade polyurethane-compatible adhesive (Loctite® PL Premium® recommended)
- Exterior-grade fasteners (trim head screws recommended)

Installation Instructions

1) Mark installation area.

Hold the part in place, make sure it is level and plumb, and mark the desired location (Figure 1A). If the part has a hollow cavity on the back, a mounting block is recommended and should be installed at this time (Figure 1B). Pre-drill any fastener locations if using screws.

Figure 1A

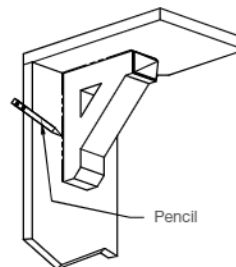
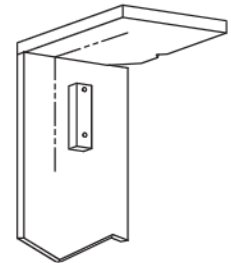


Figure 1B



2) Apply adhesive.

Apply a 1/4" bead of adhesive to the mounting surfaces of the part, leaving the bottom open for water to escape (Figure 2).

Figure 2

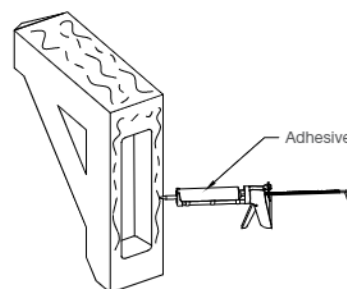
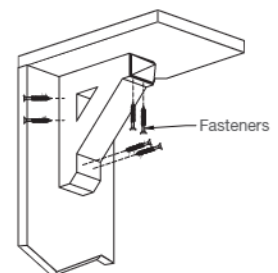


Figure 3



3) Fasten.

Press the part into place and fasten with exterior-grade fasteners (Figure 3), making sure to countersink them below the surface. Fasteners should be no more than 16" apart. Remove any excess adhesive.

4) Fill and sand fastener holes.

Fill fastener holes with filler and sand to match surrounding area, if needed, but be careful not to remove the primer.

5) Touch up or finish.

Refer to Fypon General Finishing Instructions. If part was finished prior to installation, touch up filled fastener holes with color-matched finish. Caulk around top and sides with sealant, leaving the bottom open for water to escape.



Installation Instructions

General Remodeling & Alternative Facades

General & Safety Information

- Wear proper personal protective equipment (PPE).
- Operate all tools per manufacturer guidelines.
- Standard woodworking saws and blades can be used for cutting Fypon® polyurethane (PUR) or PVC products.
- Fypon PUR parts are NOT load bearing.
- These instructions are intended as a supplement to standard installation instructions if product is installed in a remodeling application or over one of the alternative facades listed.
- All Fypon products must be installed per the following instructions and finished within 90 days of installation to maintain warranty coverage. However, QuickRail products are an exception and should NOT be finished.

Siding Applications

1) Identify support behind siding.

For all siding applications, best results are achieved by cutting away the siding so the part can seal against a flat surface and proper sealant or trim can be installed around the part. If that cannot be done and the part must be applied over the top of the siding, the following instructions apply.

Confirm that fasteners will anchor into solid sheathing.
If installing over siding, proceed to the steps below.
If not, follow standard installation instructions.

2) Apply drainage strips (hardboard and wood siding only).

For irregular parts that cannot be flashed along the top edge, apply thin vertical strips of moisture-resistant material (vinyl undersill trim works well) to the back of the part with adhesive and galvanized roofing nails, spaced no more than 16" apart, to prevent moisture from getting trapped behind the millwork (Figure 2).

3) Drill pilot holes.

Position the part and drill multiple pilot holes through the part and the siding at a high point on the siding if possible (Figure 3). When possible, drill through the thick sections of the part. Pilot holes should be no more than 16" apart.

4) Enlarge pilot holes (vinyl siding only).

Enlarge the pilot holes in the vinyl siding to approximately three times the diameter of the pilot hole (Figure 4). This allows room for the siding to expand and contract.

5) Seal holes in siding (vinyl siding only).

Fill the holes in the vinyl siding with flexible moisture-resistant sealant to prevent moisture penetration.

Figure 2

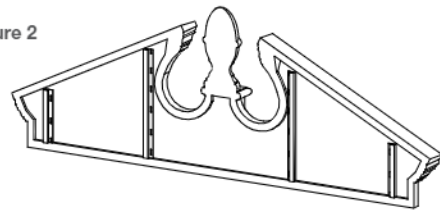


Figure 3

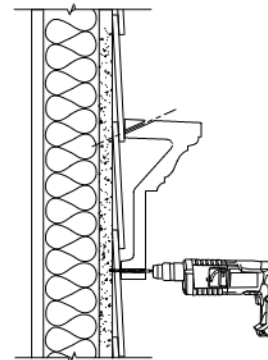
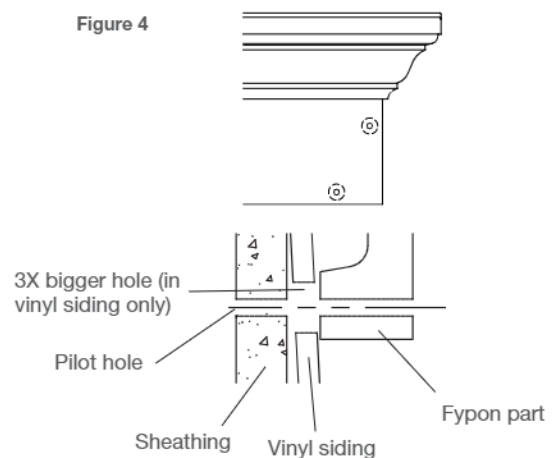


Figure 4





Installation Instructions

General Remodeling & Alternative Facades

6) Apply adhesive to mounting surfaces.

If part will seat flush against siding, apply a 1/4" bead of adhesive to the mounting surfaces of the part, leaving gaps at the bottom for water to escape (Figure 6A). If using drainage strips, also apply adhesive to the strips (Figure 6B). If siding is lapped and will not allow the part to sit flush against it, a flexible construction adhesive is optional if fasteners are used.

7) Position and fasten.

Position the part to align the pilot holes, press firmly into place and fasten with exterior-grade fasteners.

Figure 6A

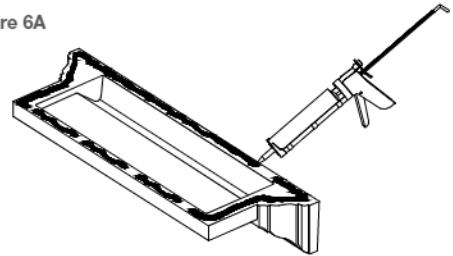
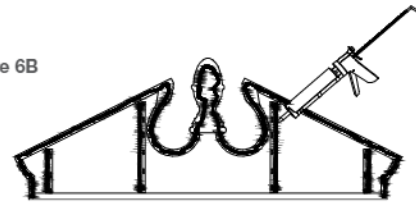


Figure 6B



Stucco, Brick & Masonry Applications

1) Apply adhesive to mounting surfaces.

Apply a 1/4" bead of adhesive to the mounting surfaces of the part, leaving gaps at the bottom for water to escape (Figure 6A).

2) Fasten.

Press part firmly into place and fasten with exterior-grade fasteners, ensuring they are inside the bead of sealant (Figure 2B) and anchor into solid reinforcement. For brick and masonry applications, use masonry fasteners. Remove any excess adhesive.

3) Apply sealant (stucco only).

Apply sealant along the top edge to prevent water from running down behind the part.

Figure 2B

